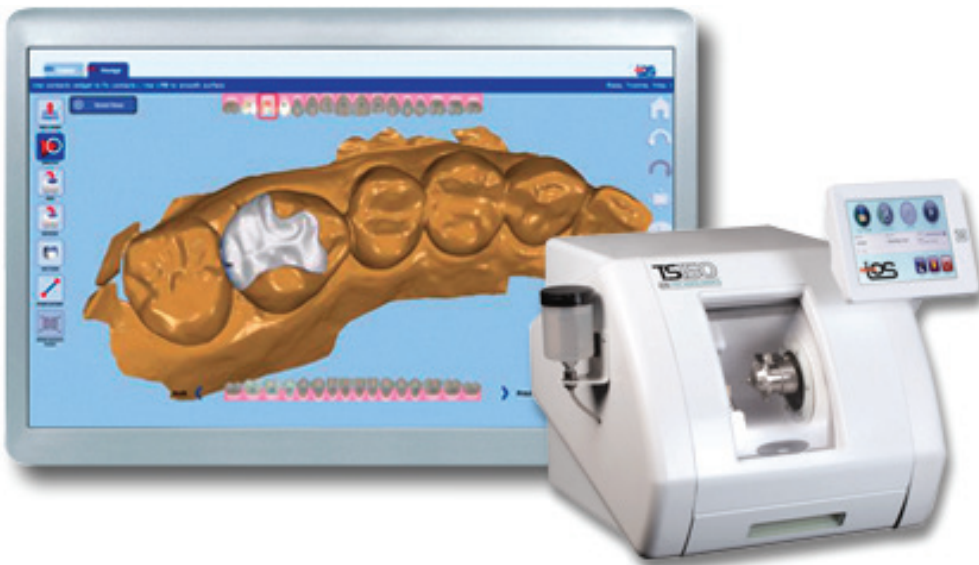


Trusted Connection to IOS Technologies' TS150™ In-Office Milling Solution



With the 3M™ True Definition Scanner and the Trusted Connection to IOS Technologies' TS150™ In-Office Milling Solution, you can offer your patients affordable, high quality, same-day digital restorations with unmatched fit, feel and finish. Access to this Trusted Connection requires a subscription to the Standard Data Plan.

- Affordable, same-day dentistry
- Lower labor and material cost per unit
- Opportunity for conversion of large direct restorations to higher quality indirect restorations

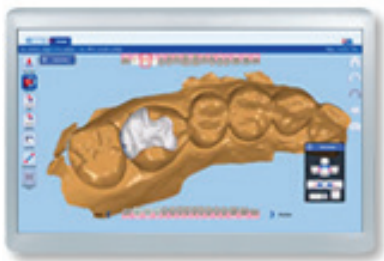


How does it work?



1. Scan and Send

Scan the preparation using the 3M™ True Definition Scanner. The large touch screen serves as a virtual digital loupe, enabling you to view, rotate and magnify the 3D model to scrutinize the clinical prep and margins. Then, send the highly accurate scan file to the FastDesign™ CAD Station through the Trusted Connection to the TS150™ In-Office Milling Solution.



2. Import and Design

The digital impression is imported into the IOS Technologies' FastDesign™ CAD Station. The FastDesign software leverages Glidewell Dental's extensive dental anatomy library to produce a highly accurate crown proposal, making the design process fast and simple. The intuitive interface guides you quickly through the design process from margin marking and design proposal, to sprue placement and final production.



3. In-Office Milling

The design is then sent to the TS150™ Mill—an efficient, accurate in-office milling unit. Featuring a powerful air-driven 150,000-RPM spindle, the orbital mill path prevents the burr from crossing over the margin, ensuring excellent marginal integrity for better fitting restorations. This wet grinding mill can produce high-quality single unit restorations with Lava™ Ultimate Restorative or other materials.



4. Seat and Cement

You can then seat and cement the restoration, typically within the same appointment. Precise-fitting restorations minimize the need for retakes, remakes and adjustments for a more comfortable and convenient patient experience.



3M ESPE Dental
2510 Conway Avenue
St. Paul, MN 55144-1000 USA

Phone 1-800-634-2249
Web 3m.com/truedef

Please recycle. Printed in USA © 3M 2015.
All rights reserved. 3M and ESPE are
trademarks of 3M or 3M Deutschland GmbH.
Used under license in Canada. TS150 and
FastDesign are registered trademarks of IOS
Technologies, Inc.